

MFA Guide

Duo is being replaced with Microsoft's MFA tools



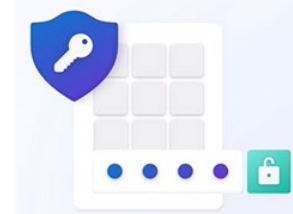
Old Duo App



MS
Authenticator
App



One Time
Passcode Fob



Windows Hello
for Business

Contents

Microsoft Authenticator App.....	2
Add your Trideum Account to the MS Authenticator App	3
Fresh Start with a OTP Fob	5
Set up Additional MFA Options	6
Windows Hello PIN	8

Download Microsoft Authenticator App to your personal electronic device

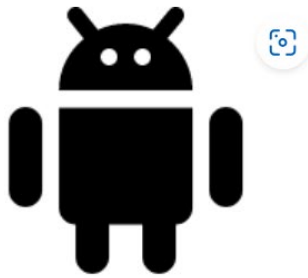
Microsoft Authenticator App

Download Microsoft Authenticator

Use simple, fast, and highly secure two-factor authentication across apps.

Get the app on your phone

Scan the QR code with your Android or IOS mobile device.



Trideum doesn't control the MS Authenticator App, you can use it for Trideum logins as well as for personal accounts.

For more information check out:

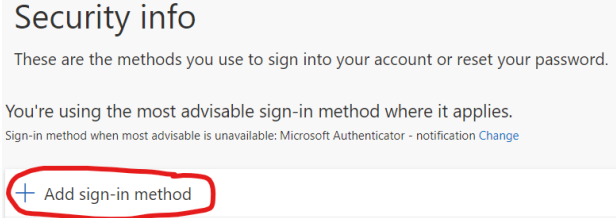
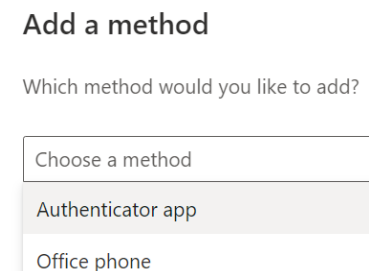
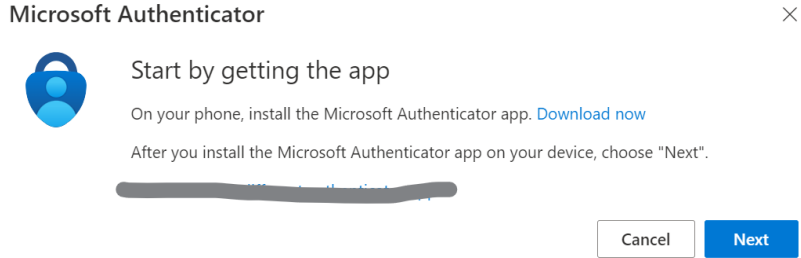

<https://www.microsoft.com/en-us/security/mobile-authenticator-app>

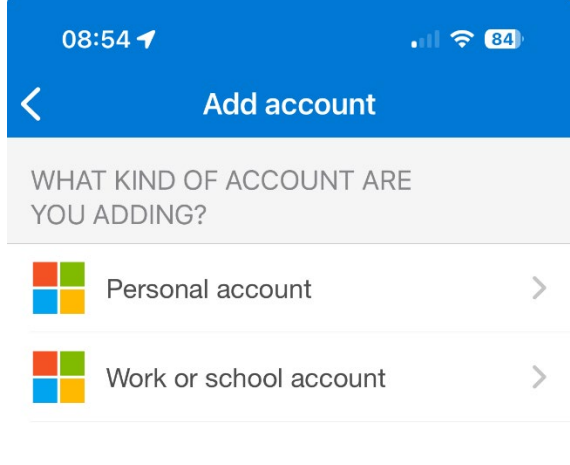
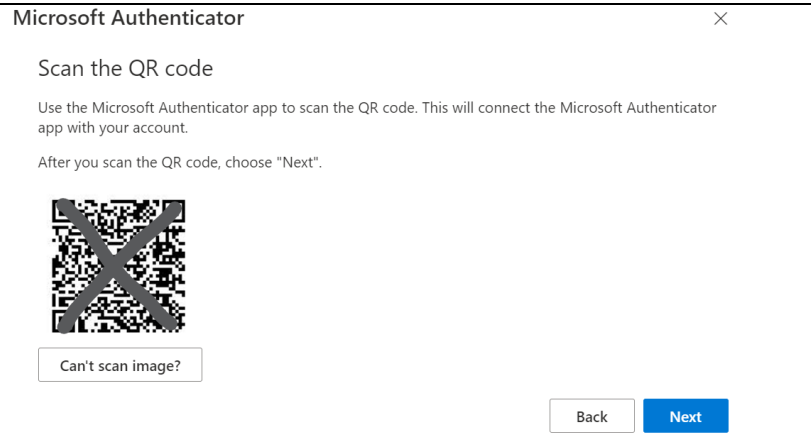
Add your Trideum Account to the MS Authenticator App

Microsoft will prompt you to download the [Microsoft Authenticator app](#) during initial login to your Windows device or into a Microsoft service. You can follow a full **Fresh Start Guide (coming soon!)**, or follow the abbreviated instructions below:

On your computer, go to the **Security info** page of your “[My Account](#)” dashboard. [Sign in](#)

NOTE: IF YOU DON'T SEE THE SECURITY INFO PAGE, GO TO ADDITIONAL SECURITY VERIFICATION, THEN SELECT THE CHECKBOX NEXT TO AUTHENTICATOR APP, AND THEN SELECT CONFIGURE TO DISPLAY YOUR QR CODE.

<p>Select Add sign-in method.</p>	 <p>Security info</p> <p>These are the methods you use to sign into your account or reset your password.</p> <p>You're using the most advisable sign-in method where it applies. Sign-in method when most advisable is unavailable: Microsoft Authenticator - notification Change</p> <p>+ Add sign-in method</p>
<p>Choose Authenticator app from the dropdown and select Add.</p>	 <p>Add a method</p> <p>Which method would you like to add?</p> <p>Choose a method</p> <p>Authenticator app</p> <p>Office phone</p>
<p>If you already have Authenticator installed on your phone, select Next to display a QR code.</p>	 <p>Microsoft Authenticator</p> <p>Start by getting the app</p> <p>On your phone, install the Microsoft Authenticator app. Download now</p> <p>After you install the Microsoft Authenticator app on your device, choose "Next".</p> <p>Cancel Next</p>
<p>If not, download the App then follow these steps:</p> <p>Open Authenticator on your phone and select the plus icon and select Add account.</p>	 <p>08:53</p> <p>Authenticator</p>

<p>Select Work or school account then tap Scan a QR Code.</p>	
<p>Back to the Security info page of your “My Account” - you’ll get a QR Code to finish adding your work account to the MS Auth App.</p> <p>Done!</p>	

Fresh Start with a OTP Fob



If you were issued a Deepnet Security one-time password token / Fob, You will not be prompted to configure Microsoft Authenticator on first login, you will instead be prompted to **enter a code from your fob**

Microsoft

ttrideum2@trideum.onmicrosoft.us

Enter code

Enter the code displayed on your authentication token

Code

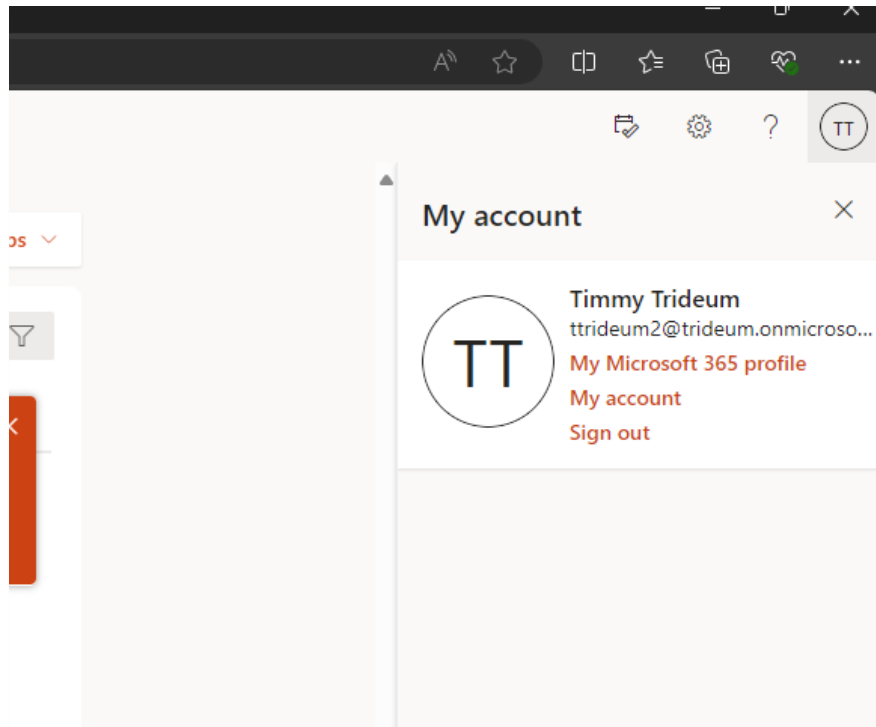
[More information](#)

Cancel Verify

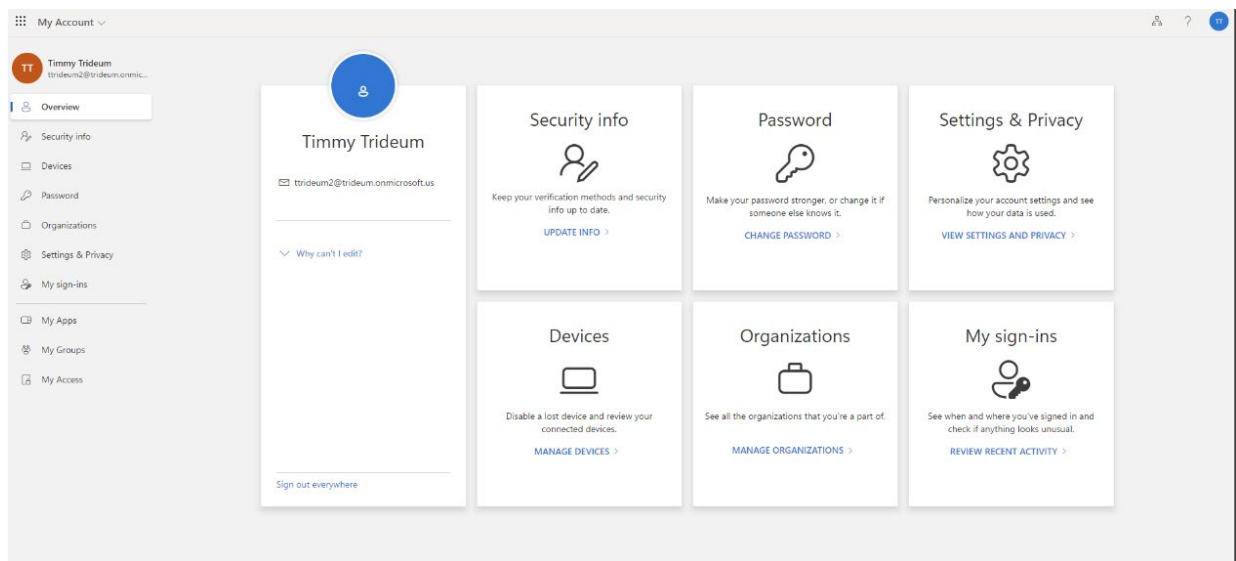
We recommend you add Microsoft Authenticator as another MFA method in your Microsoft account. See [Setting up Additional MFA Options:](#)

Set up Additional MFA Options

Log into a Microsoft Online (<https://www.office365.us/>) ▶▶

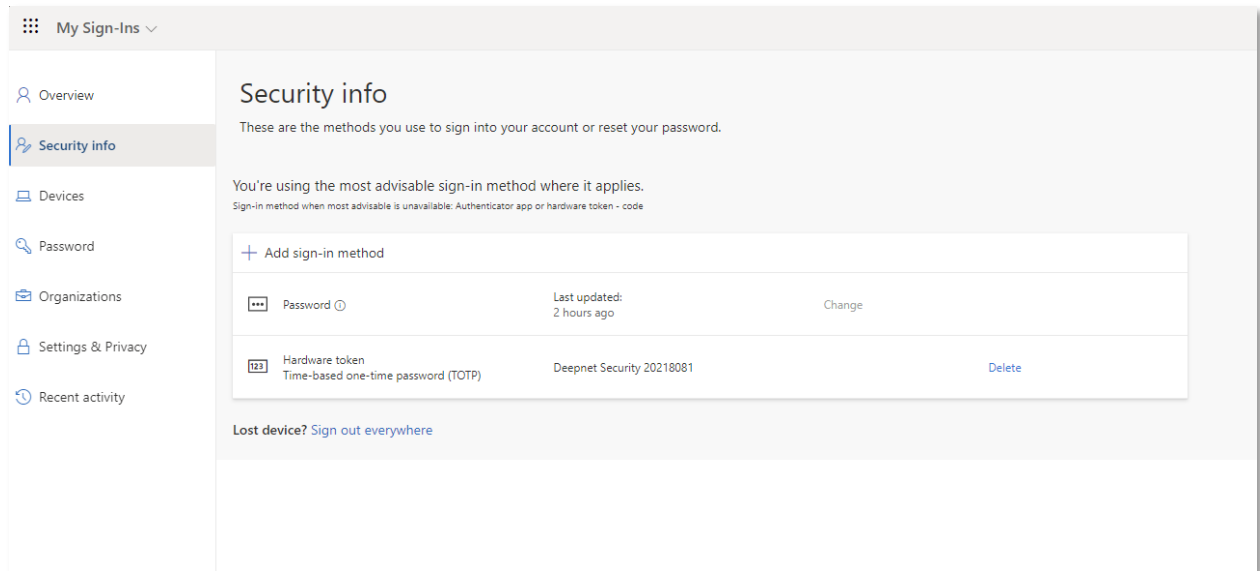


click your **user icon** in the top right corner and choose the **My Account** option from the menu ▶▶

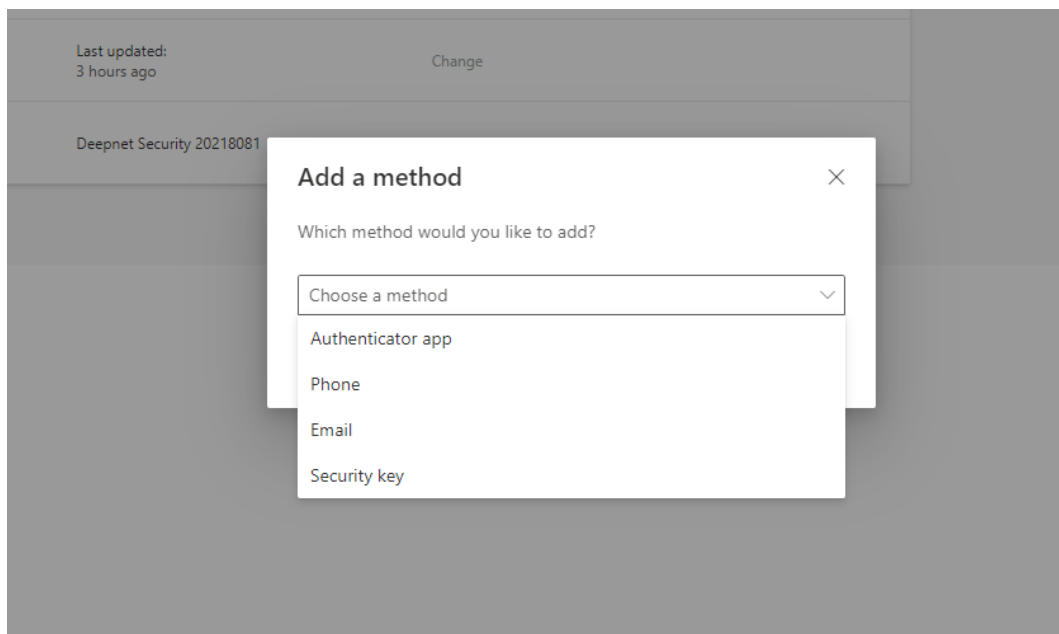


From the **My Account** menu click on UPDATE INFO under Security info ▶▶

Setting up Additional MFA options



Click **+ Add sign-in method** >>

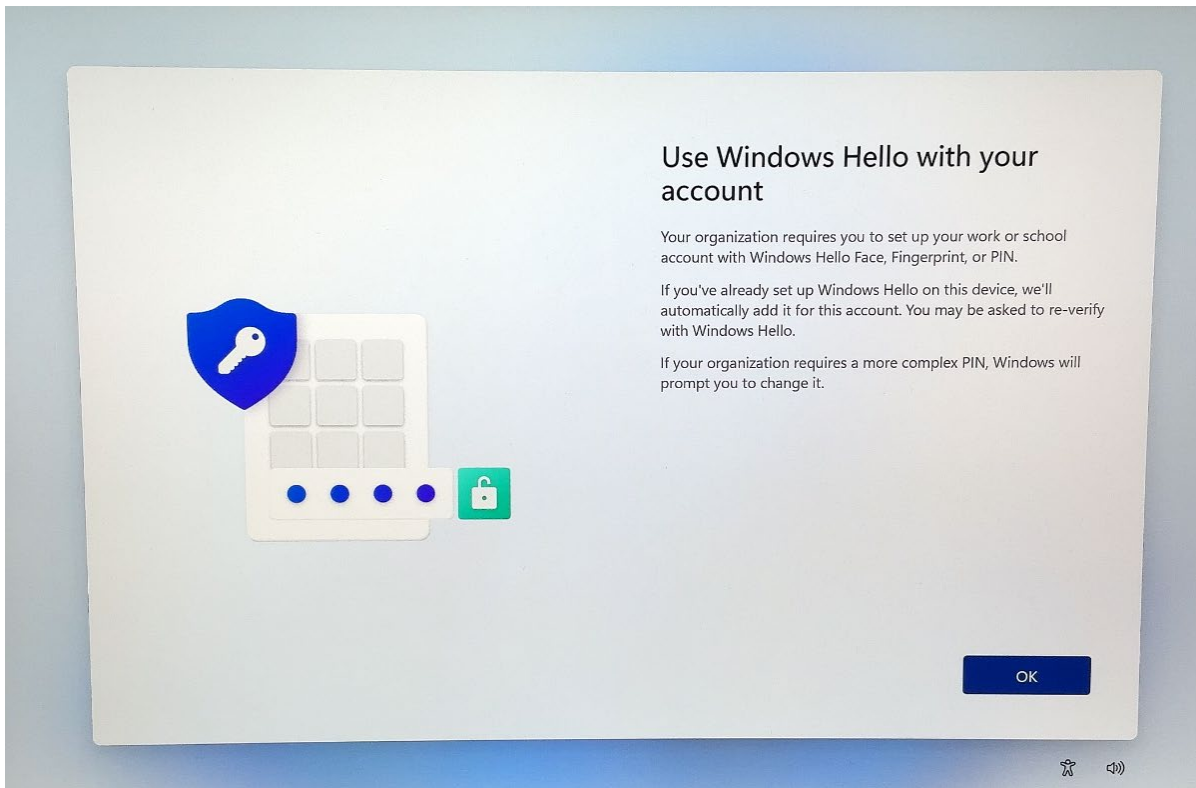


Pick Authenticator App, or add one of the other options & follow the instructions!

Windows Hello PIN

During Fresh Start of a computer, you'll get an option to setup a device specific **PIN** >>

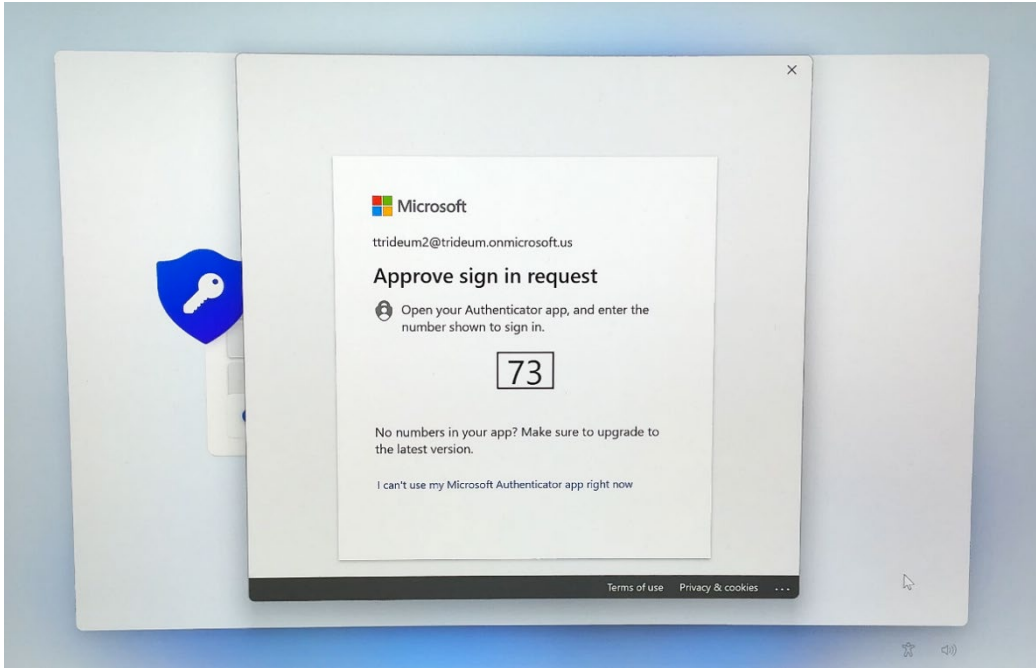
Windows Hello is an authentication technology that allows users to sign in to their Windows devices using a PIN, instead of a traditional password. It provides enhanced security through phish-resistant two-factor authentication, and built-in brute force protection



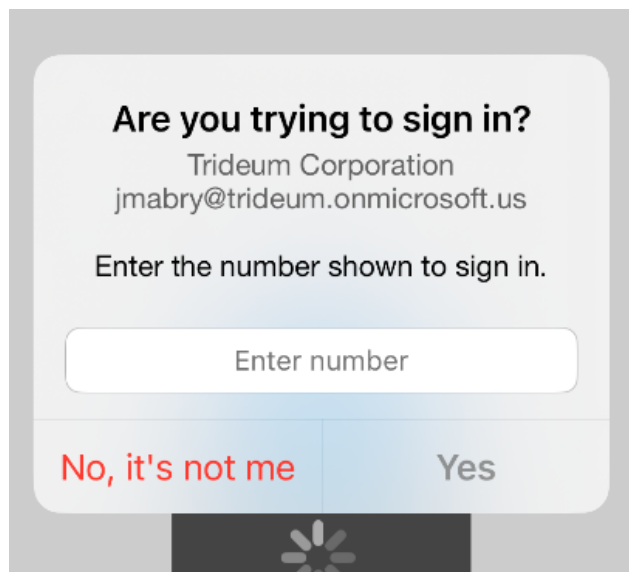
Click **OK** to continue >>

Hello for Business

You will receive a MFA challenge on your MS Authenticator App before setting the Hello PIN >>

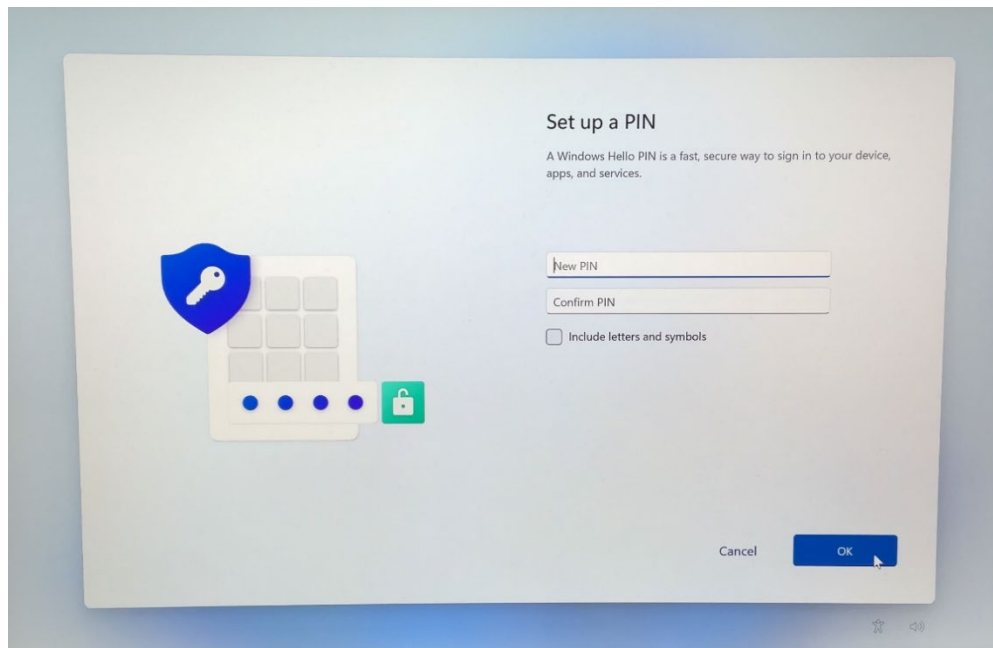


Enter the number in the Microsoft Authenticator prompt on your phone >>



Hello for Business

The next screen will prompt you to create a “Windows Hello” PIN >>



The PIN must be 6 digits minimum, but can be as complex as you prefer

Enter your New PIN >>

Confirm your PIN >>

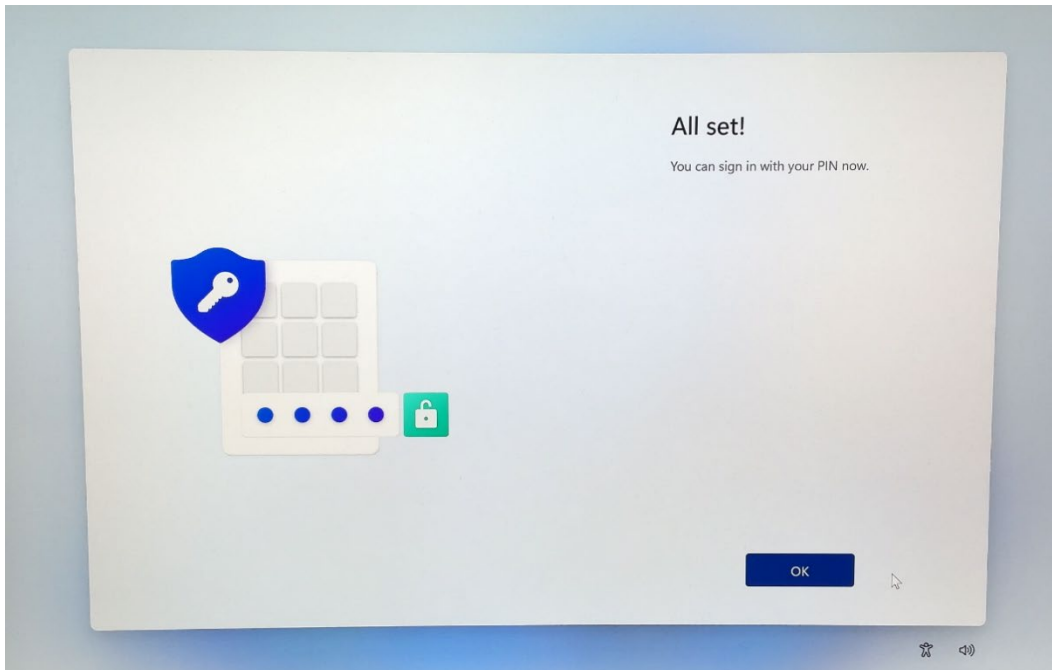
Select **OK >>**

Note this PIN is a secure multi-factor authentication method that binds to your machine only, it will not be available on other machines you may login to

Hello for Business

If your PIN is acceptable, you have completed the process:

Select **OK** >>



You will be prompted to sign in with your Hello PIN >>