

CyberChEC will provide greater connection, standardization, data integration and assessment capacity for our CMF and commercial enterprise customers in the Cybersecurity domain.

CyberChEC is an innovative product designed for organization leaders and instructors in the Cyber Mission Force (CMF), and commercial enterprise customers engaging in cybersecurity training endeavors.

BACKGROUND

Cyber missions, by their nature, require the exposure of weaknesses or vulnerabilities, so training in this area requires a sandbox environment for security purposes when mimicking and rehearsing realistic scenarios.

In current setups, the process and techniques for identifying strengths and weaknesses in behavioral and communication patterns—within and across teams and roles—is inconsistent and incomplete. This is due to manual processes across a wide array of disparate systems and records.

Without an end-to-end system encompassing and connecting all operations associated with CMF readiness, many face common challenges in regard to training efficiencies, data integration and standardization across cyber training teams and mission exercises.

Making Connections Across All Aspects of Cyber Training

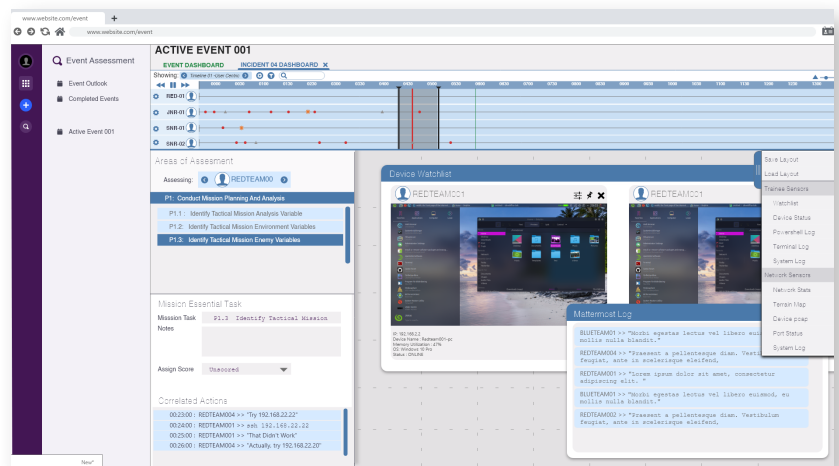
CyberChEC creates connections across all aspects of training.

- required skills
- overall training objectives
- individual event design
- sensor deployment and assessment

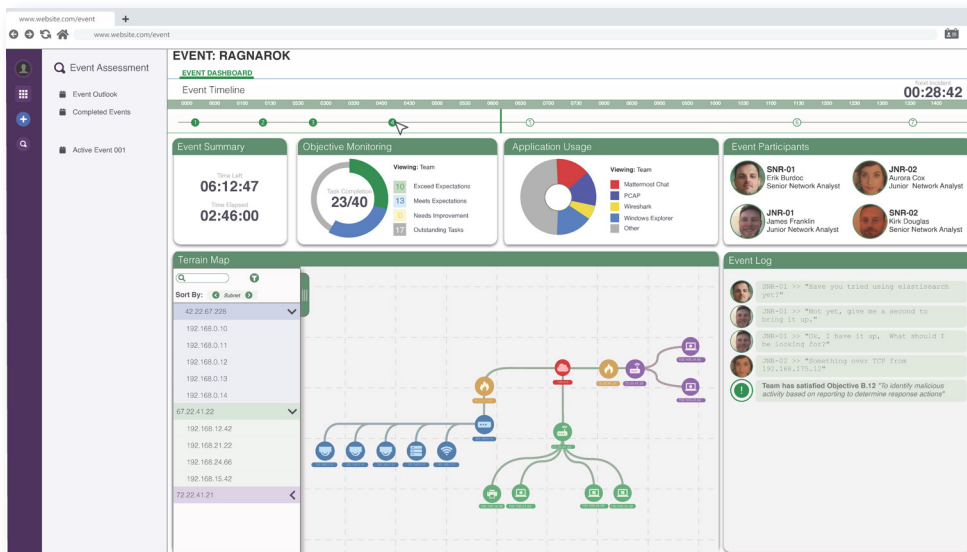
Assessments can be leveraged in the design of future training exercises.

Creating Tailored Training Experiences

In this connected training experience, we can use a person's or team's training history and current status to design training for them with relatively little effort. CyberChEC helps to ensure these connections are automatically made, and that the cyber range is prepared and ready to collect the right data to help automate the assessment process.



This is an example of Trideum's Augmented Analytics Product Line. It enjoys a modular, open systems architecture (MOSA) design and can be used standalone or deeply integrated into client enterprise architectures.



Solution Benefits

- Integrate real-time data – in order to enable comprehensive assessments and reduce manual workflows.
- Easily gather and assess data as it's occurring. Rely on up-to-date information on individuals, role types and teams across services to shape decisions (actions or plans) relevant to their role and function.
- A better network picture enables users to track and report activity and change of interest - this can be status or indications of mission events, value of interest changes reported by sensors, and who is operating where.
- CyberChEC standardizes assessments – making comparisons and assessments easier.
- Develop assessment plans more quickly and shorten setup times with reusable, consistent and searchable scenario components.
- Determining which computer systems to deploy various sensors on is time-intensive and very manual – automated deployment can greatly reduce time and effort.
- Automatic event tracking with correlating timelines will enable greater ability to assess success factors and understand the decisions that were made.

KEY CONTACTS

Kurt Lessmann

Chief Technology Officer
klessmann@trideum.com
256.527.8502

Jason Martin

Senior Solutions Architect
jmartin@trideum.com
256.361.9673

trideum.com

Embracing the World's
Toughest Challenges
with a Servant's Heart

TRIDEUM[®]

ANALYZE. INTEGRATE. INNOVATE.